

# RAPIDA

## Noise barrier flexible cover



### DESCRIPTION

**Rapida** (\*): flexible curtain for creating noise-proof, dustproof and visual barriers.

**Rapida** is composed of a fiber mat, lined on both sides with fabric and sewed with high resistance yellow Kevlar thread and black carbon thread.

**Rapida** is made of non-toxic, resistant materials with fireproof and UV treatment.

### APPLICATIONS

The main possible applications of **Rapida** are the following:

- Noise barriers for building construction sites or activities
- Visual or anti-dust barriers
- Movable Acoustic wall panels for working areas and technological systems
- Acoustic wall panels for temporary events, fairs and shows
- Efficient and extremely lightweight sound absorbing claddings and sound absorbing treatments

(\*)Patent application presented for Industrial Invention (Prot. no 102019000020694 date 11/11/2019).

Note: the image above is just a tip of installation. The panel only is supplied and the structure is excluded.

## TECHNICAL FEATURES

	<b>Rapida F1</b>	<b>Rapida F4</b>
PANELS: STANDARD DIMENSIONS	(WxH) 1,25x2,10 m	(WxH) 1,25x2,10 m
PANELS: CUSTOM DIMENSIONS (minimum order q.ty 200 pcs)	(WxH) 1,85x2,10 m (WxL) 1,85x4,10 m	(WxH) 1,85x2,10 m (WxL) 1,85x4,10 m
EXTERNAL COATING	Non-woven polypropylene fabric	Non-woven polypropylene fabric
INTERNAL INSULATION	Polyester fiber	Polyester fiber and sound insulating mebrane
SOUNDPROOFING INSULATION (UNI EN ISO 10140-2 UNI EN ISO 717-1)	Rw = 16 dB	Rw = 22 dB
SOUND ABSORPTION (UNI EN ISO 11654:1998)	$\alpha_w = 0,8$ dB	$\alpha_w = 0,6$ dB

## MAIN ADVANTAGES

The main features of **Rapida** can be summarized as follows:  
excellent noise insulation and sound absorption performances

- panel-panel joints with high acoustic tightness
- flexible, light, reinforced, mechanically resistant and suitable for both indoor and outdoor installations
- multifunction sheet suitable as a movable, noiseproof, visual and dustproof barrier
- simple and quick to install, even on existing structures (e.g. construction site fencing, scaffolding, barriers on New Jersey, etc.)
- easily removable and reusable for other applications

The above specifications refer to the standard product.

**Rapida** can be customized by changing the type of fabric, colour, image printing and application of reflective strips. Standard colours: grey, green and black.

**Rapida** can be manufactured in standard panels or in rolls up to 20 m long.

For requirements related to a specific use it is advisable to contact our technical office.

## INSTALLATION INSTRUCTIONS

For assembly, please refer to the demonstration video that can be viewed in the links below:

[www.cir-ambiente.it/habitat/barriera-da-cantiere/rapida-pannello-per-barriera-antirumore-da-cantiere/](http://www.cir-ambiente.it/habitat/barriera-da-cantiere/rapida-pannello-per-barriera-antirumore-da-cantiere/)  
[www.youtube.com/watch?time\\_continue=5&v=FHFQXSjUg3c&feature=emb\\_logo](https://www.youtube.com/watch?time_continue=5&v=FHFQXSjUg3c&feature=emb_logo)

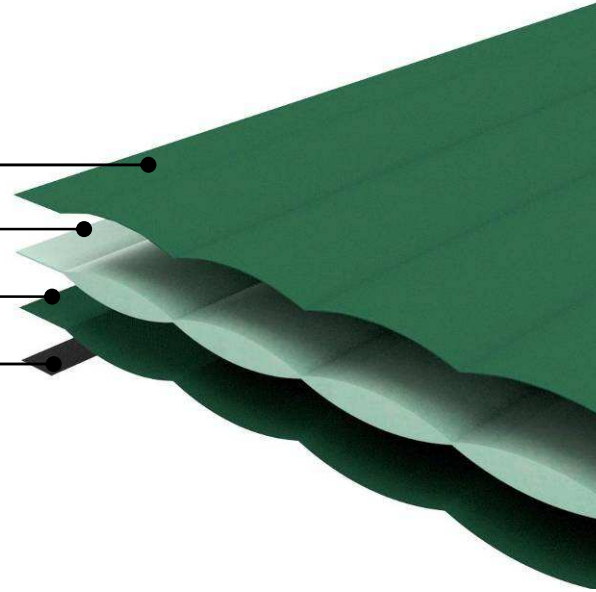
## PANEL COMPOSITION

EXTERNAL FRONT SIDE SHEET

INSIDE INSULATING MAT

EXTERNAL REAR SIDE SHEET

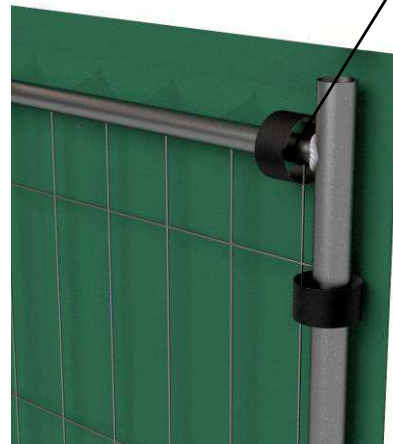
VELCRO FOR VERTICAL JOINT



## RAPIDA MANUFACTURING DETAILS



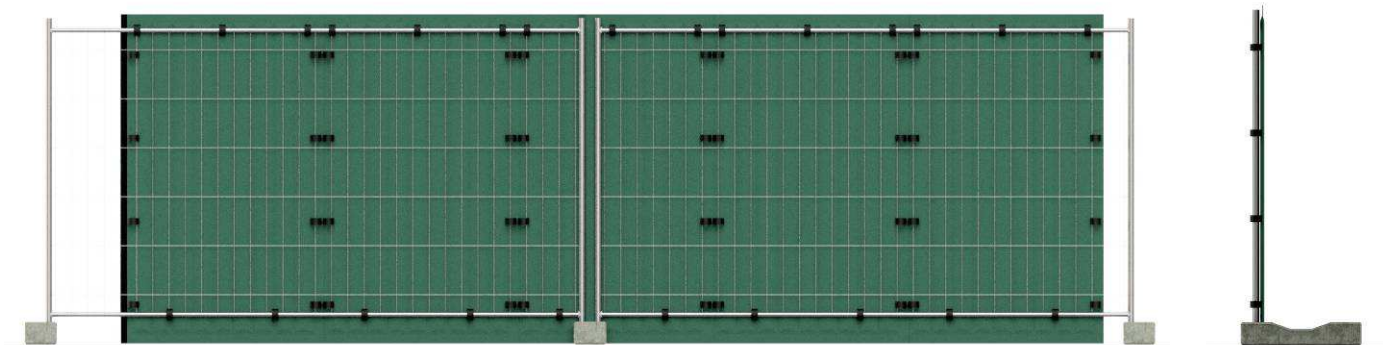
Fastening Velcro strips to supporting structure



soundproofing and sound absorbing panel with kevlar thread seams

velcro strips for vertical joint with acoustic tightness

## TYPES OF INSTALLATION



EXAMPLE OF INSTALLATION ON A FENCE



EXAMPLE OF INSTALLATION ON A NEW JERSEY

## PANEL FINISHES



BLACK



GREY



GREEN



LEAVES

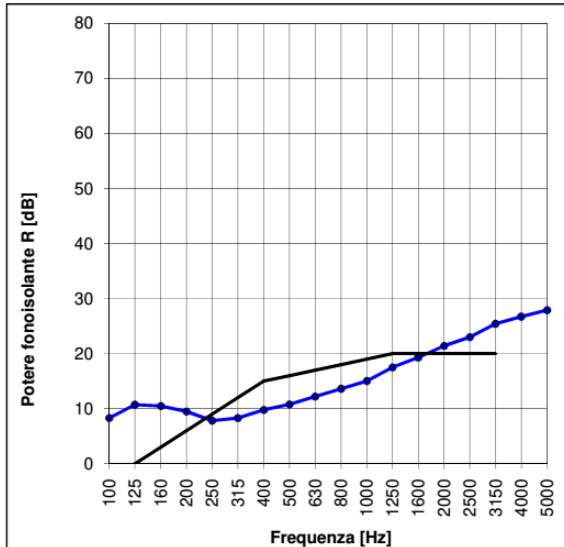
**Rapida** can be customized by changing the type of fabric, coloring, printing images and applying reflective strips. Standard colors: grey, green and black; standard printing: leaves.



## RAPIDA ACOUSTIC CHARACTERISTICS

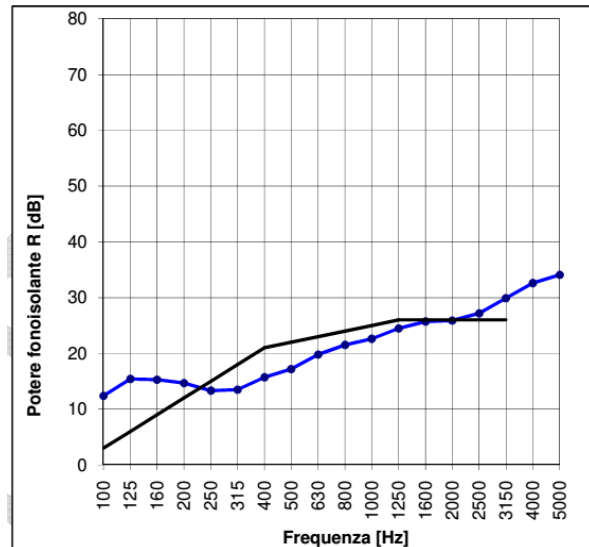
**Acoustic insulation** of buildings and building elements according to the UNI EN ISO 10140 series standards. Evaluation indices relating to airborne noise calculated according to the UNI EN ISO 717-1: 2013 standard.

### RAPIDA F1



**R<sub>w</sub> (C; C<sub>tr</sub>)= 16 (0; -2) dB**  
( Evaluation according to ISO 717-1)

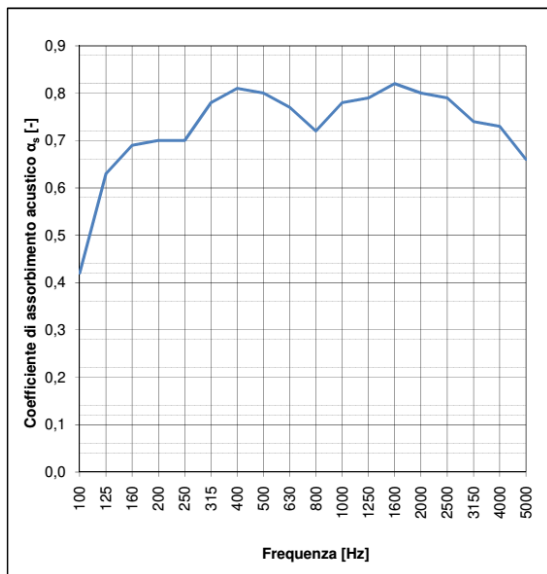
### RAPIDA F4



**R<sub>w</sub> (C; C<sub>tr</sub>)= 22 (-1; -3) dB**  
(Evaluation according to ISO 717-1)

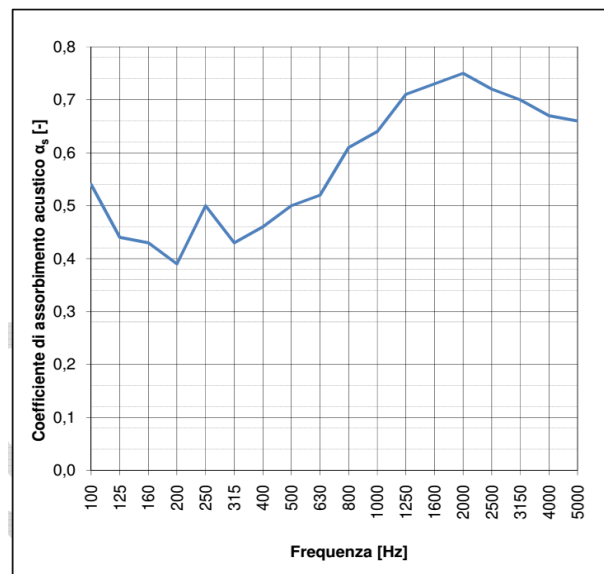
**Acoustic absorption** in reverberating room according to UNI EN ISO 354: 2003.

### RAPIDA F1



**$\alpha_w=0,80$  acoustic absorption "Class B"**  
(Standard evaluation indices according to UNI EN ISO 11654:1998)

### RAPIDA F4



**$\alpha_w=0,60$  sound absorption "Class C"**  
(Standard evaluation indices according to UNI EN ISO 11654:1998)

CIR Ambiente reserves the right to make any changes to the products without prior notice.